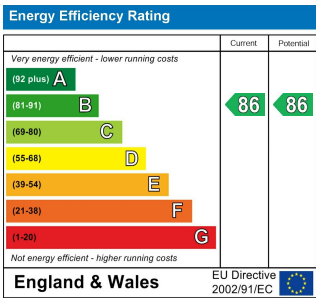
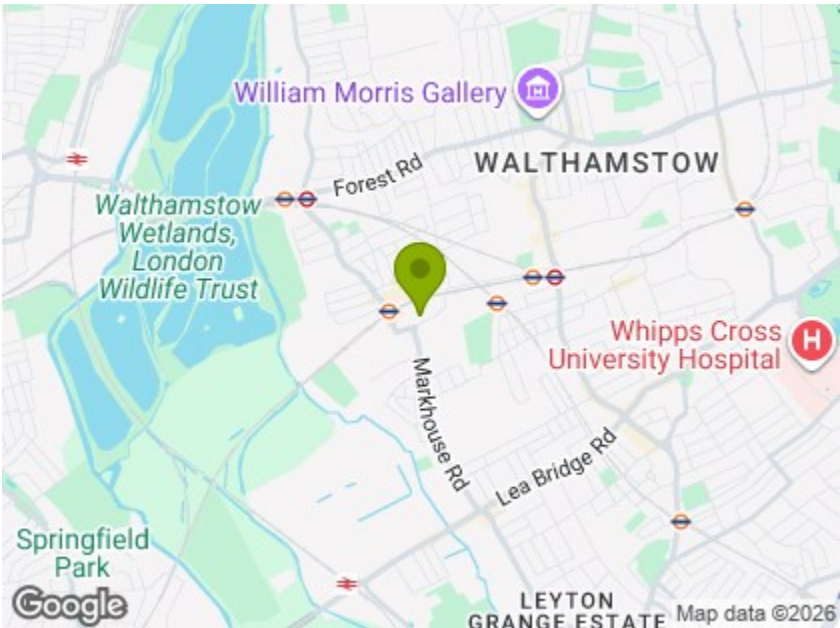


Third Floor

Total Area: 51.4 m² ... 553 ft² (excluding balcony)
All measurements are approximate and for display purposes only



82 SOUTH GROVE, WALTHAMSTOW

£1,850 Per Calendar Month
1 Bed Apartment - Purpose Built



Features:

- High Spec Apartment
- Open Plan Living Room
- Private Balcony
- Contemporary Bathroom
- Modern Fitted Kitchen
- No Parking
- Council Tax Band B
- EPC Rating B
- Holding Deposit Equivalent To 1 Week's Rent Capped at £400

A spacious one bedroom apartment in a contemporary, designer development just moments from Walthamstow High Street, St James Street station and our newest social hub – Crate St James. Design & Decor is boxfresh and spotless throughout and all properties have private balconies.

Malt Court is a striking designer development, sleek and modern with pleasant communal areas and grounds, including bicycle parking. Cyclists can be at Walthamstow Wetlands, at 500 acres London's largest nature reserve, in just five minutes courtesy of the Q2 Cycleway, which weaves its way right into the heart of the city.

REQUEST A VIEWING
0203 397 9797

E11, E7, E12 & E15
hello11@stowbrothers.com
0203 397 2222

E4 & N17
hello4@stowbrothers.com
0203 369 6444

E17 & E10
hello17@stowbrothers.com
0203 397 9797

E18 & IG8
hello18@stowbrothers.com
0203 369 1818

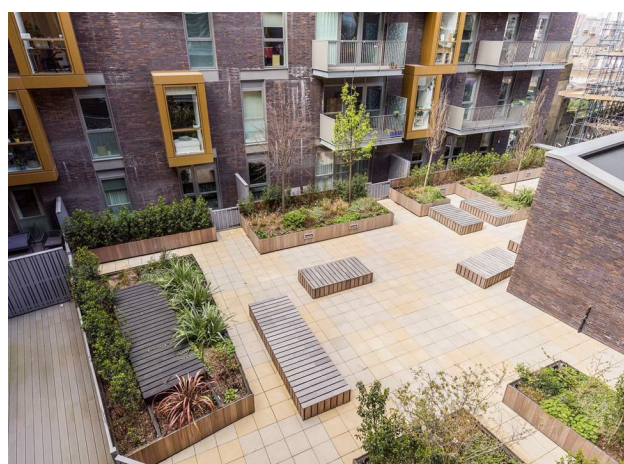
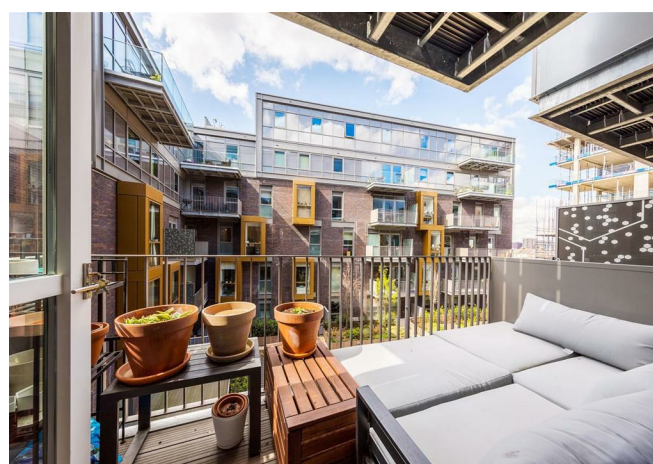
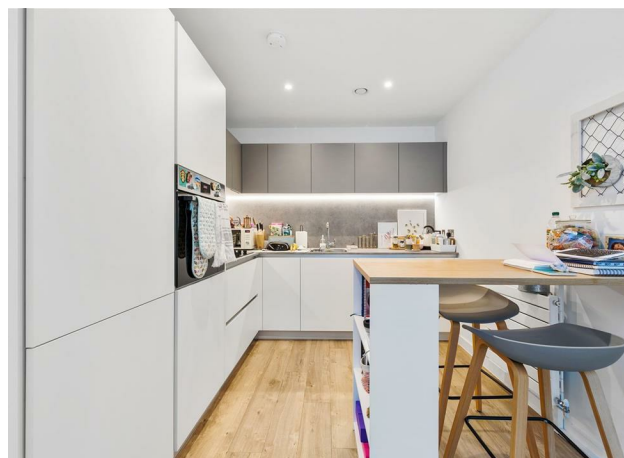
E8, E9, E5, N16, E3 & E2
hellohackney@stowbrothers.com
0208 520 3077

New Homes
newhomes@stowbrothers.com
0203 325 7227

Investment & Development
id@stowbrothers.com
0208 520 6220

Property Maintenance
propertymanagement@stowbrothers.com
0203 325 7228

STOWBROTHERS.COM
@STOWBROTHERS



REQUEST A VIEWING
0203 397 9797

IF YOU LIVED HERE...

You'll be enjoying brand new, boxfresh fixtures and fittings throughout, with high end appliances in the spacious kitchen/lounge areas, coming in at anything up to a capacious 337 square feet. Stylish engineered hardwood runs underfoot, you have grey splashbacks, a generous suite of glossy white fitted cabinets and a full complement of integrated appliances.

Elsewhere, the bedroom is a generous double, finished to the same high standard, with plush grey carpeting, chrome fixtures and designer radiators. The

bathroom is finished in glossy grey metro tiling, with a rainfall shower. And finally of course there's your private balcony or roof terrace; wonderful outdoor spaces with views over the city.

St James Street station is just three minutes' walk, for direct twenty minute runs to Liverpool Street. Alternatively, Walthamstow Central is just a half mile on foot and will get you straight to Oxford Circus just as quickly via the Victoria line. Walthamstow High Street, home to the longest street market in Europe, starts right next to St James Street, for all the supermarkets, cafes and other amenities you could wish for.



WHAT ELSE?

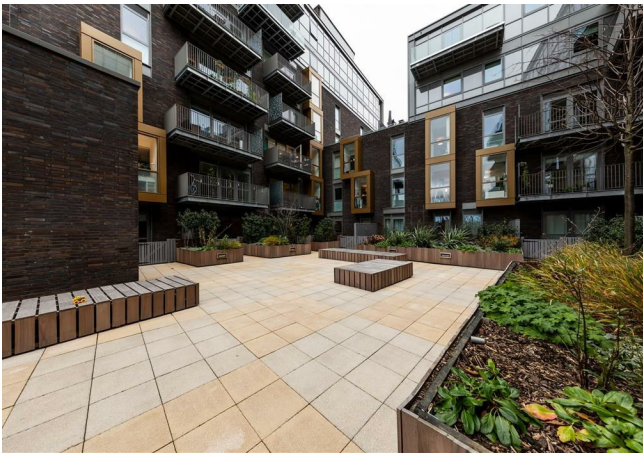
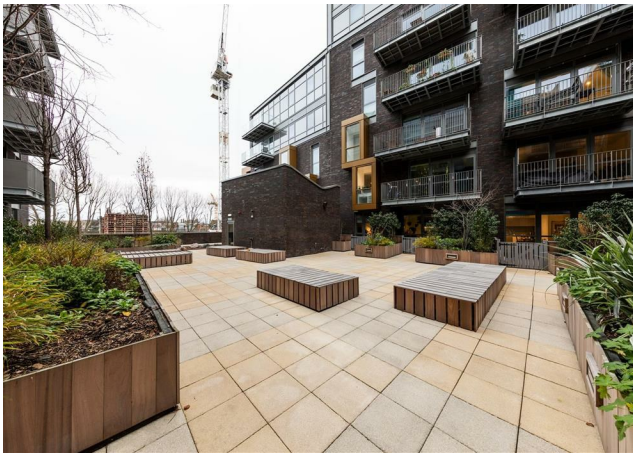
- Crate St James, home to a rotating array of independent entrepreneurs from cafes to bakeries, breweries and barbers, is less than five minutes' walk. Be sure to try the mouth-watering offerings at Baggio Burger.
- For your new local we have to recommend a personal favourite, The Chequers is a real 'stow institution, a much loved gastropub with a delicious menu and large beer garden, all just five minutes away on foot.
- Current or prospective parents will be pleased to know you have nineteen primary/secondary schools in a one mile radius alone, all rated 'Good' or better by Ofsted. The 'Outstanding' South Grove Primary is just a two minute walk.

FOLLOW US ➡ @STOWBROTHERS
STOWBROTHERS.COM



REQUEST A VIEWING
0203 397 9797

FOLLOW US ➡ @STOWBROTHERS
STOWBROTHERS.COM



Kitchen/Reception

15'7" x 21'4"

Bedroom

9'1" x 17'11"

Bathroom

7'6" x 6'9"

Balcony

12'5" x 5'1"



REQUEST A VIEWING
0203 397 9797

FOLLOW US ➡ @STOWBROTHERS
STOWBROTHERS.COM